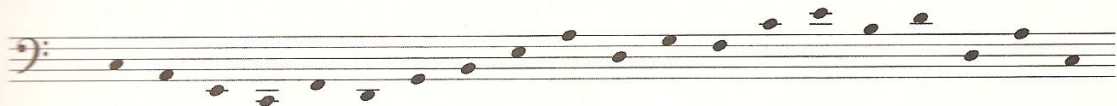


Identify each note with a specific letter name. Circle ALL notes that represent middle C.
Observe clefs!

1.



2.



3.



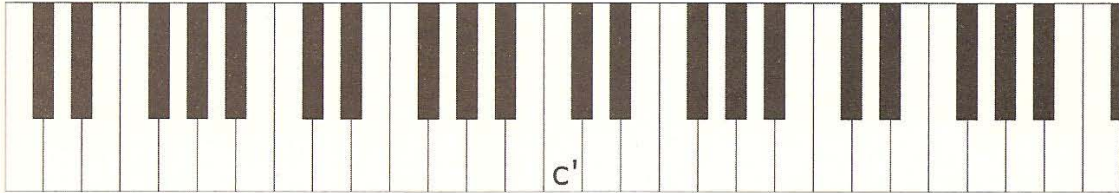
4.



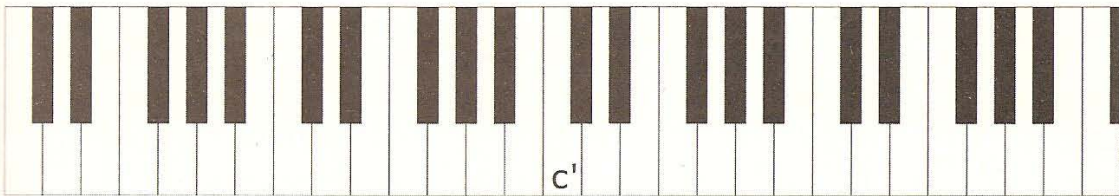
Identify the requested notes on the piano keyboard. Octave designations can be ignored for now.

Middle C (c') is given for you on each of the following keyboards.

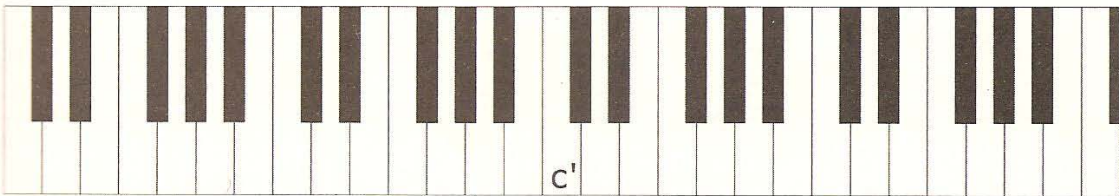
1. Write in all other Cs, giving each its proper octave designation.



2. Write in all Ds and Gs with octave designations.



3. Write in all Fs and Bs with octave designations.



4. Write in all As and Es with octave designations.

